





# THE BEGINNING OF A LEGACY

1993 – ILEX was born out of a compelling passion for leather craft. One of the select British brands for luxury leather bags and accessories, each individual product here is the result of fine craftsmanship, attention to detail, and an eye for the beauty and sophistication of natural leather.

Created using handpicked and ethically sourced calf leathers – the styles reflect the brand's essence of elegance and streamlined simplicity featuring trendsetting fashions of the season.



# THE ILEX LADY



The click of her heel echoes through the office boardroom.

Her laughter brightens the day, as she shares a gossip over tea and cupcakes.


You can find her on a park bench, dreaming away amidst nature.

You can spot her at her glamorous best on an evening in Broadway.

The Ilex lady is an enigma, but a beautiful one. She is fashionable, sophisticated, young at heart and a true dreamer. She is a woman of substance – who is not afraid to be herself. She takes pride in her personality, as much as in her appearance.

The Ilex lady has style, class and charming subtleties. She's the one who catches the eye, and heart.





90

DAYS

OF

SUMMER



## *IT'S THAT TIME OF THE YEAR AGAIN*

---

Gentle breeze and picnic baskets, all over Hyde Park. Afternoon tea in quaint cafes, tucked away in Picadilly Circus. Vibrant parade and Calypso music, on the streets of Notting Hill.

The delightful English summer is all about vivid bursts of colours, playful charm and classic elegance. So is our exclusive summer collection. These vibrant and subtle hues are just what you need to cruise through the 90 days of sheer bliss.

# 30

DAYS OF

RADIANT

HAPPINESS

*WITH A SPLASH OF: LEMON, TANGERINE, APPLE*

The summer is here and you can feel it in the warm sunrays on your shoulder and the lively greens beneath your feet. It's time to bring out the happy colors.





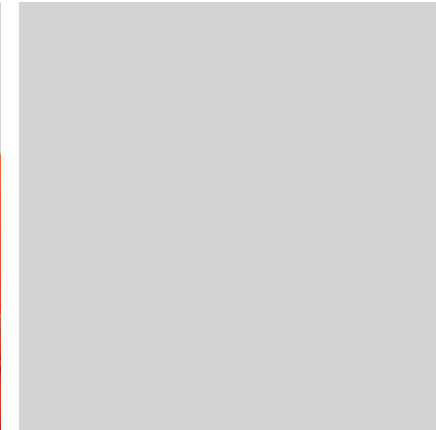
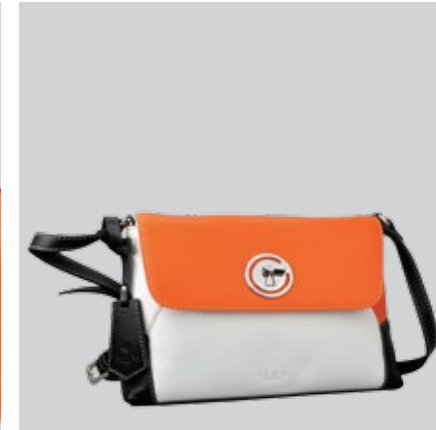
A SLICE OF  
SUNSHINE  
ON YOUR WAY  
TO WORK







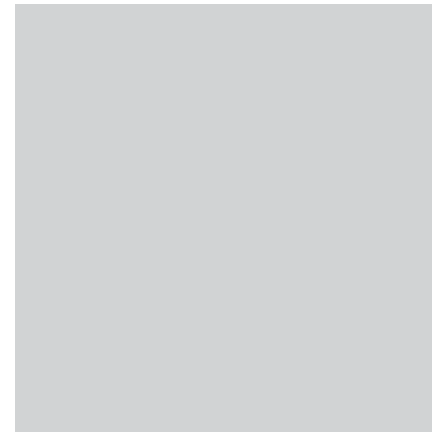
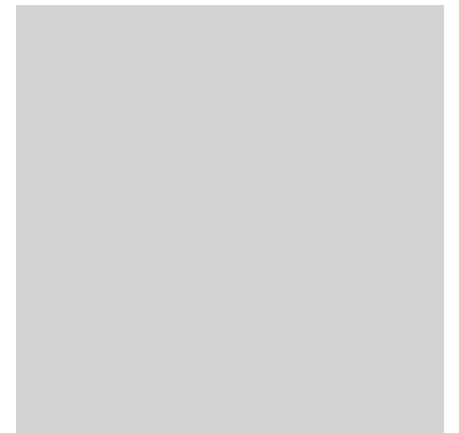
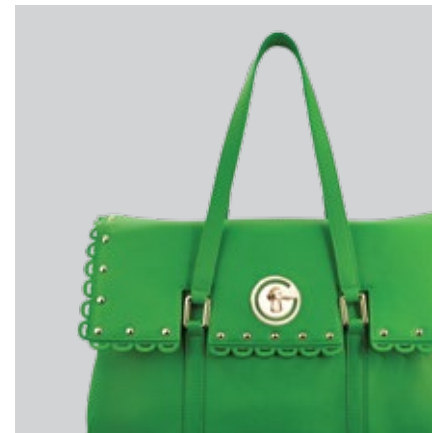
A DASH OF  
TANGERINE  
ON YOUR  
SHOPPING SPREE







A DOLLOP OF  
APPLE GREEN  
FOR YOUR  
SUNDAY BRUNCH









# 30

*DAYS OF  
ETHEREAL  
CHARM*

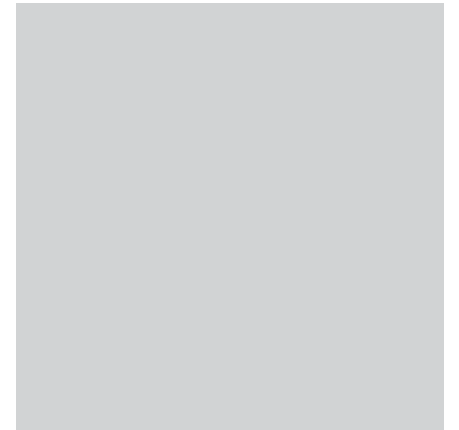
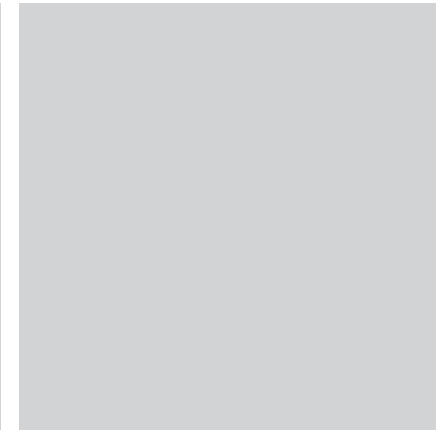
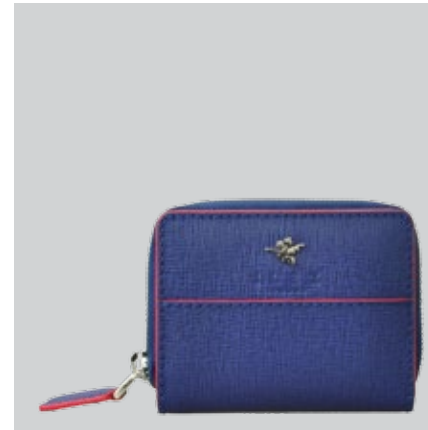
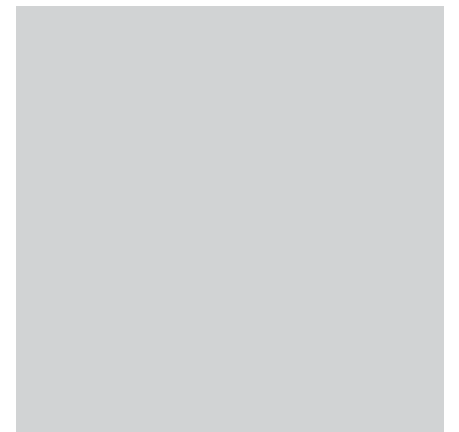
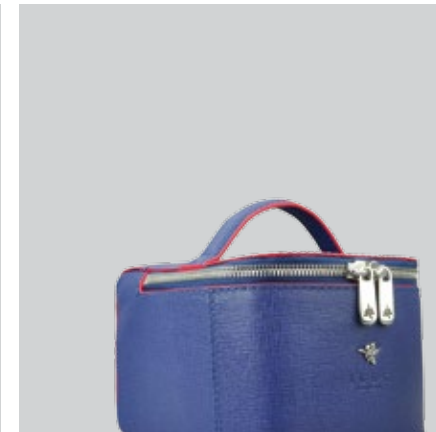


*WITH A WHISPER OF: OYSTER, NAVY, TAN*

The days of summer roll on. Mornings are spent basking in the sun at a street cafe. Evening walks along Southbank become longer. And the colours get increasingly charming.



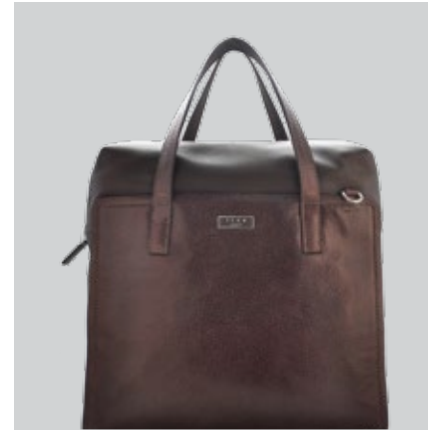
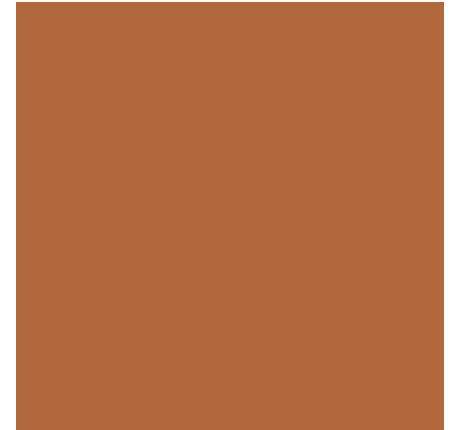
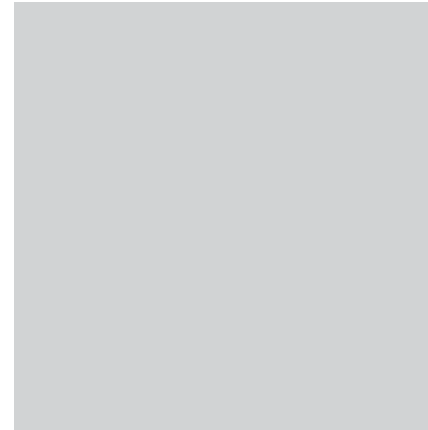
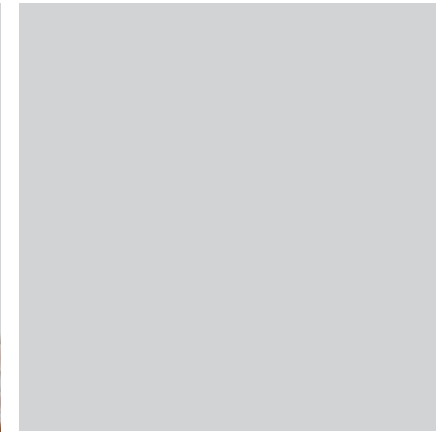
*SUBLIME NAVY*  
*FOR A WEEKEND*  
*GETAWAY*







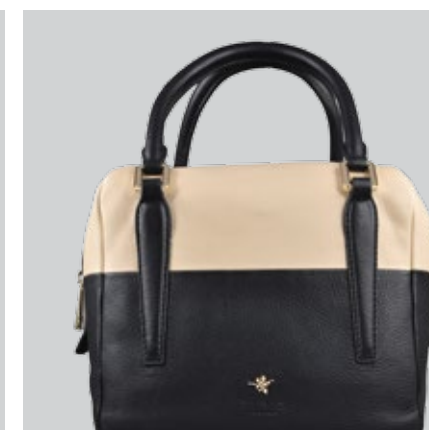
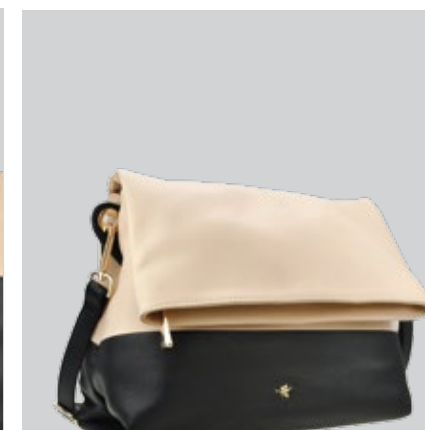
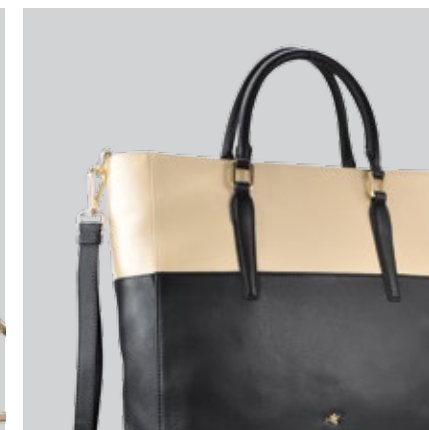
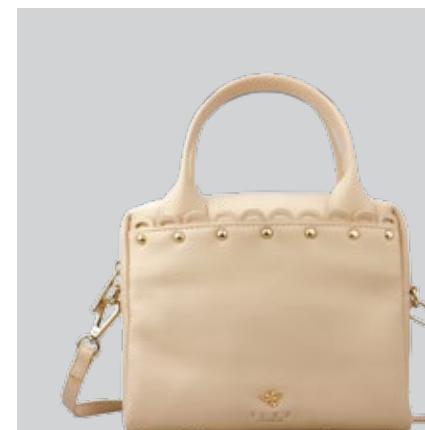
CHARISMATIC  
TAN FOR YOUR  
AFTER WORK  
COCKTAIL







SUBTLE OYSTER  
FOR YOUR COFFEE  
DATE AT 6











# 30

*DAYS OF  
TIMELESS  
ELEGANCE*



## *WITH A TOUCH OF: INDIGO, ASH, BLACK*

The last few days are a delicate balance – between the vivid blush of summer and subtle elegance of autumn. It's time to soak in the warmth of summery cheer, while getting in touch with the classic grace of Fall. Make sure you get the colours right.



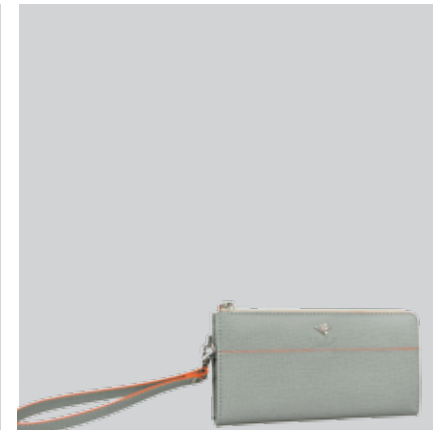
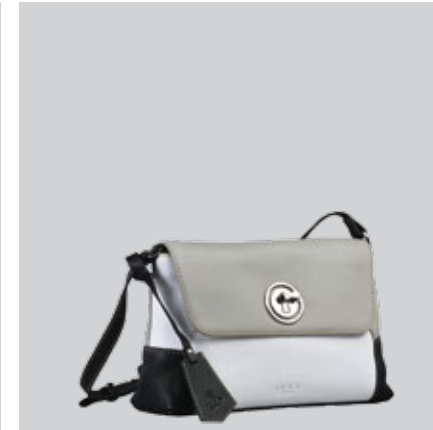
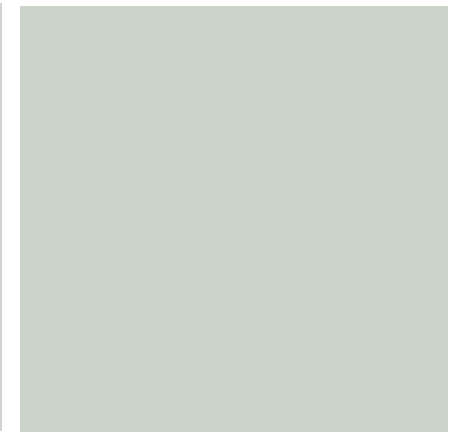
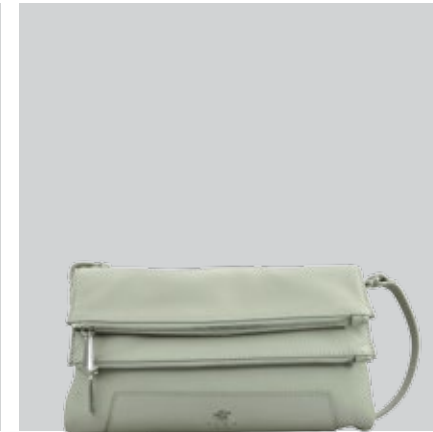
ELEGANT  
INDIGO FOR AN  
EVENING AT  
BROADWAY







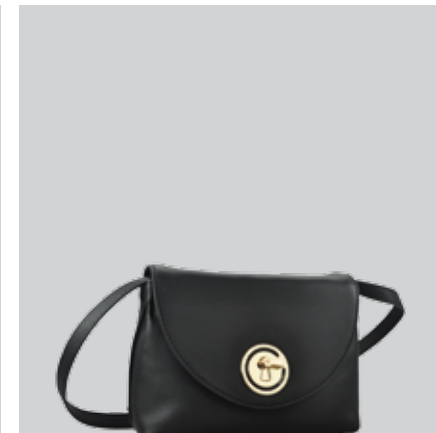
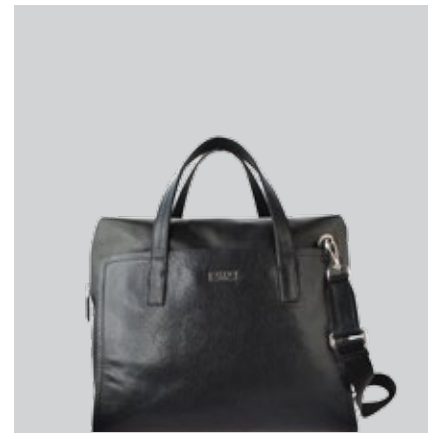
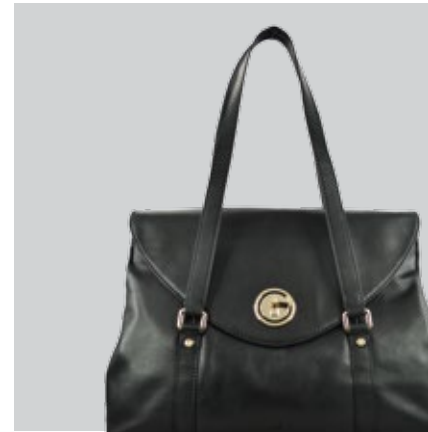
*ENTICING ASH  
FOR YOUR BEST  
FRIEND'S  
BACHELORETTE  
PARTY*







*CLASSY BLACK*  
*FOR A NIGHT OF*  
*WINE AND JAZZ*



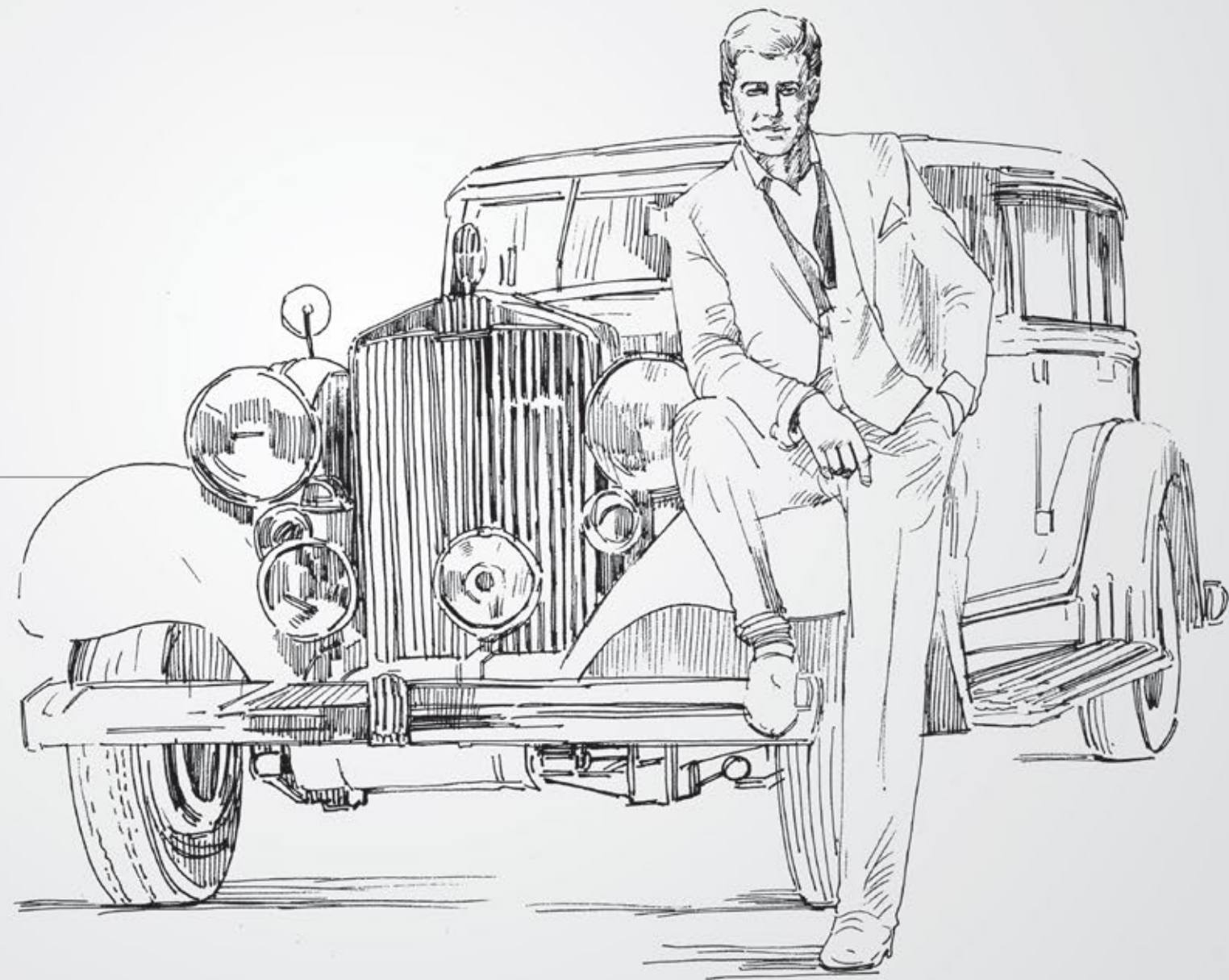




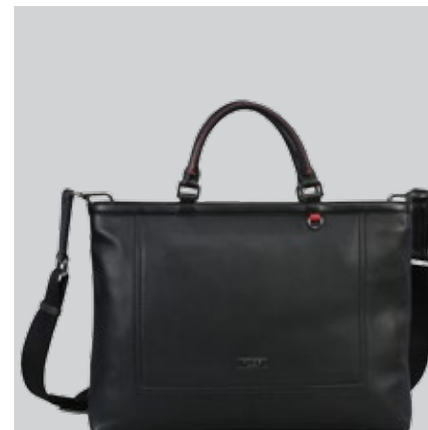
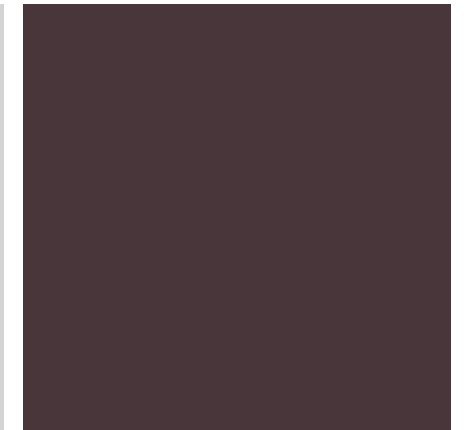
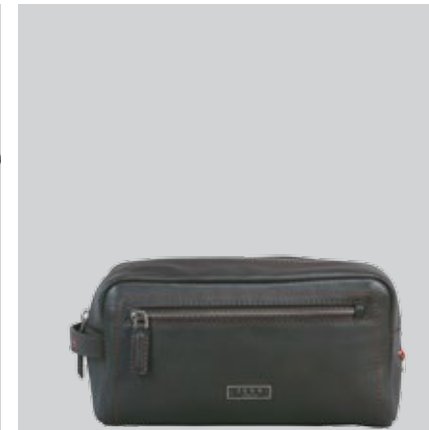
# THE ILEX MAN

Polite in his words and firm in his beliefs. Enjoys calm evening at the Broadway. Loves his afternoon tea and late night wine. The Ilex Man is defined by his elegant masculinity and his dauntless choices make him apart.

This summer brown and black are his favourite expressions.



*BLACK & BROWN*  
*FOR MEN AND*  
*THEIR VOYAGE*



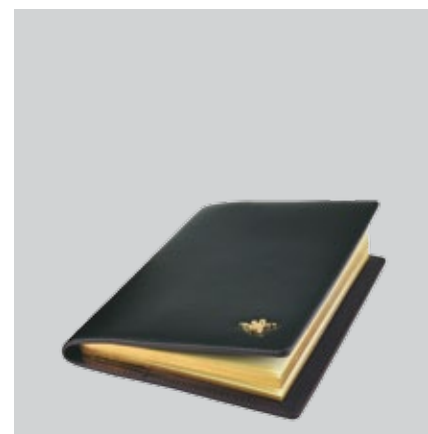
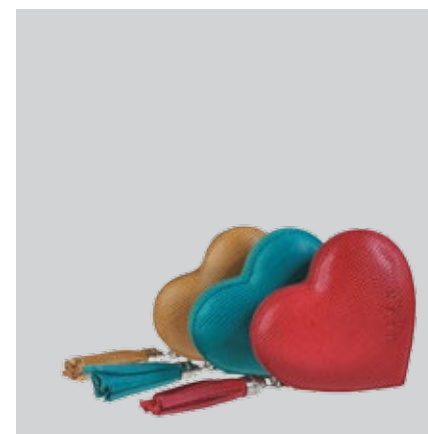
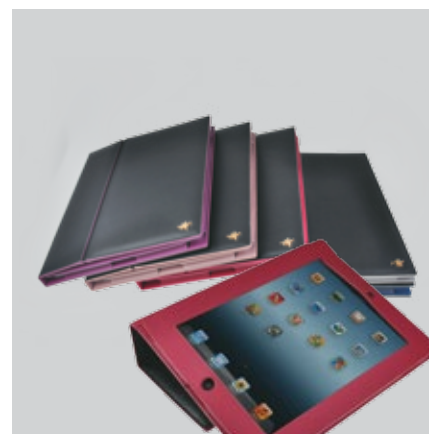






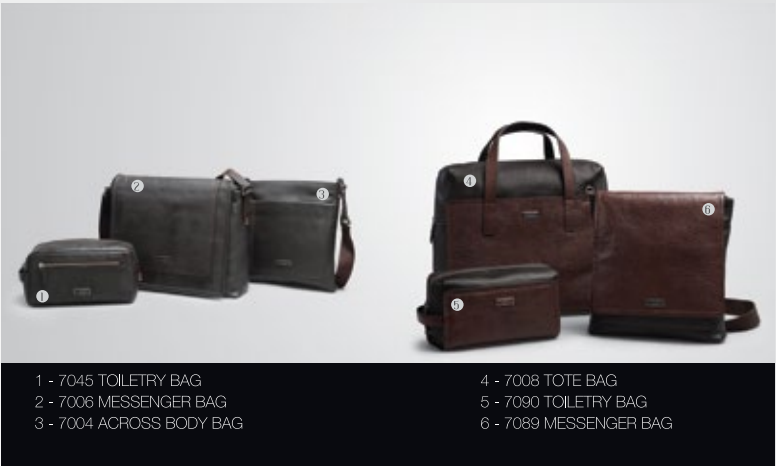


# ACCESSORIES









Lexus Ventures policy is one of continuous improvement and the right to change models, specifications, equipment and the price at any time is reserved. Some illustrations and colour are simulated and the product may be slightly different in design and colour to that shown in the look book. Lexus Ventures do not guarantee the accuracy of the information provided in this look book.

# GLOBAL PRESENCE

## ENGLAND, SCOTLAND & WALES

BAVERLEY  
BRIGHTON  
BUXTON  
CHANNEL ISLANDS  
DEVON  
DORSET  
EDINBURGH  
GLASGOW  
GUERNSEY  
HAMPSHIRE  
HITCHIN  
ISLE OF WALES

JERSEY  
LEICESTER  
LINCOLN  
LONDON  
N. AYRSHIRE  
SALISBURY  
SHIFNAL  
SUSSEX  
WEST YORKSHIRE  
WINCHESTER  
YORK  
YORKSHIRE

## NEW ZEALAND

ARROWTOWN  
ASHBURTON  
AUCKLAND  
CAMBRIDGE  
CHRISTCHURCH  
DUNEDIN  
NADI  
NELSON  
WANGANUI  
WELLINGTON  
WHANGAREI

## AUSTRIA

AMESTETTEN  
GRAZ  
KREMS  
LINZ  
NEUSTADT  
POLTEN  
STEYR  
TULLN  
VIENNA  
WIEN

## GERMANY

BERLIN  
COLOGNE  
DUSSELDORF  
FRANKFURT  
HAMBURG  
HANNOVER  
MUNICH  
NUREMBERG

## RUSSIA

KAZAN  
MOSCOW  
NOVGOROD  
SAMARA  
ST. PETERSBURG

## LITHUANIA

KAUNAS  
VILNIUS

## INDIA

KOLKATA





1000 Great West Road  
LONDON, TW8 9DW, UK

T: +44(0) 203 657 5680

e: [info@ilexbags.com](mailto:info@ilexbags.com) | [www.ilexlondon.com](http://www.ilexlondon.com)